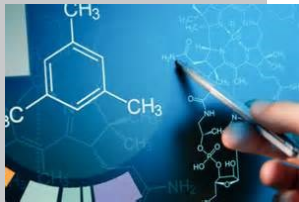


NOVA Series GC Purifier



www.arminc.com
719-538-5959
sales@arminc.com



Features

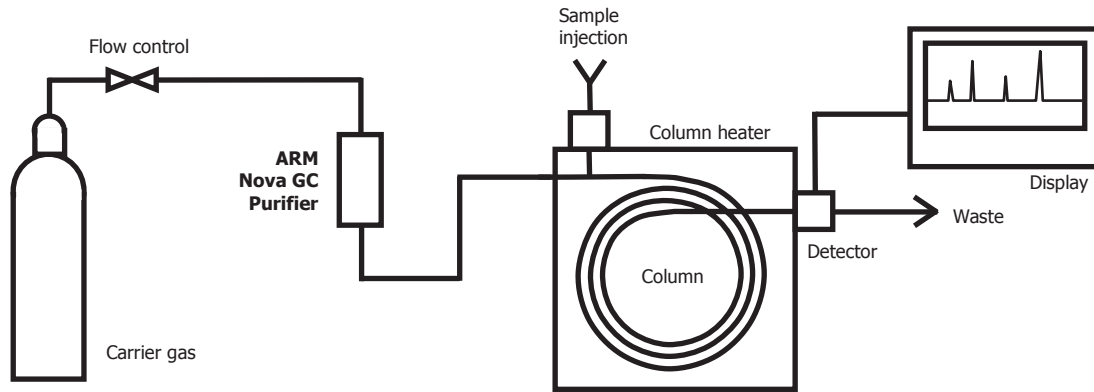
- Heated getter technology
- 12 month life at rated flow
- Flow rate to 200 sccm
- Integral particle filtration
- Long service life
- Compatible gas fittings
- Stainless steel vessel
- Low pressure drop
- Replaceable cartridge

Benefits

- Optimized instrument performance
- Improved column life
- Increased sensitivity (LDL)
- Reduced base-line noise
- Reduced maintenance
- Reproducible GC results



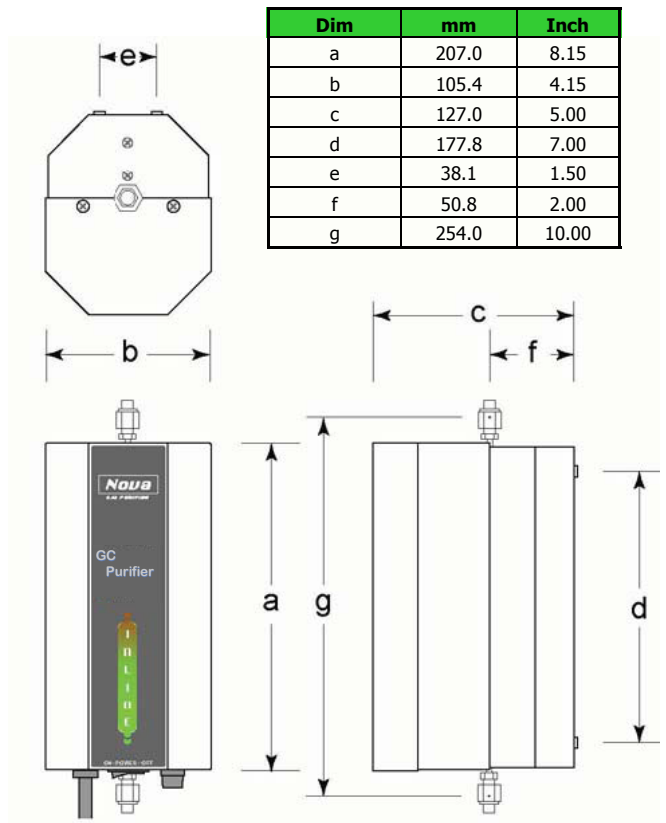
GC Purifiers



Gas chromatography equipment uses a carrier gas to transport the sample gas through the GC column. To ensure the carrier gas does not contribute impurities to the sample gas under test, it is imperative to have a carrier gas of the highest purity possible.

Typical carrier gas choices include helium, nitrogen, and argon. Which gas is selected is dependent on the type of analyzer and impurities being measured. Regardless, the higher the carrier gas purity, the better the analyzer performance.

NOVA Series GC Purifier Specifications	
Max Operating Pressure	250 PSIG (17.24 BAR)
Max Operating Temperature	400°C
Maximum Flow Rate	200 sccm
Pressure Drop	<2 psid typical
Particle Filtration	0.003 µm
Vessel	300 series stainless steel
Typical Inlet Gas Purity	99.999%
Outlet Purity	<10 ppb
Input Power	100VAC, 120VAC, 230VAC, 50/60Hz, 600W (max)
Inlet/Outlet Fittings	1/8" compression



Options

At ARM we try to make every product adaptable to meet the customer's requirements. ARM's GC purifier is no different. We can provide the GC purifier with fittings that match the GC, manual inlet and/or outlet valves if required/desired can be included.

Spares/Replacement Parts

Although the design is robust and designed to provide years of reliable performance, spare/replacement parts are always just a phone call away.

Ordering Information

The chart at right lists model numbers to order based on carrier gas type. Be sure to complete the model number with the 3 digit AC voltage you will be using to power the GC purifier.

Model	Voltage Options	Gases Purified ²	Impurities removed	Removal Efficiency
GC-050R-S02-He/Ar-FP-(voltage)	100, 120, 230 VAC	He, Ar	CO, CO ₂ , H ₂ , H ₂ O, N ₂ , O ₂ , CH ₄	<10 ppb
GC-050N-S02-N2-FP-(voltage)	100, 120, 230 VAC	N ₂	CO, CO ₂ , H ₂ , H ₂ O, O ₂ , CH ₄	<10 ppb ¹

Note 1 CH₄ = <50 ppb

Note 2 Contact ARM, Inc. for gases purified other than those listed.